

# Product Catalog

---





**Since the year of 2004, Sunset A.S. presents its innovative designs enhanced with high quality-affordable price policies, to the taste of its customers.**

*Today, both domestically and abroad, the company is in a position as the only company that is able to deliver the most economical, secure and fast sales/technical maintenance service via the professional authorized dealers that are positioned as "local."*

*Sunset A.S. provides basic services like design, planning, selection of appropriate and affordable materials, resolution of the technical details and conduction of manufacturing with the architect, engineer, designer employees in its payroll each of whom are certified and specialists in their respective fields.*

**The same today as it will be tomorrow, we are aiming to exceed and continuously improve the expectations of our national and international customers.**



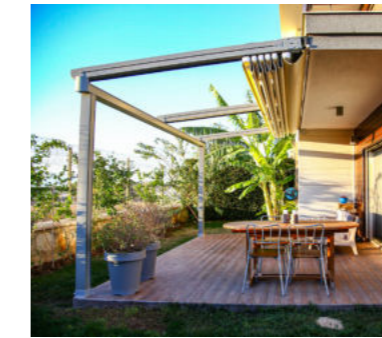
## Table of Content

<b>1</b>	<b>CEDRUS</b>
<b>8</b>	<b>JUNIPER</b>
<b>10</b>	<b>WILLOW</b>
<b>13</b>	<b>OLIVA</b>
<b>15</b>	<b>CARPE</b>
<b>17</b>	<b>OXIA</b>
<b>21</b>	<b>SELVI</b>
<b>25</b>	<b>PINO</b>
<b>27</b>	<b>BOSSO</b>
<b>30</b>	<b>DAPHNE</b>
<b>31</b>	<b>SEKOYA</b>
<b>33</b>	<b>AINE</b>
<b>35</b>	<b>VERLASS</b>
<b>39</b>	<b>SKYCLOUD</b>
<b>41</b>	<b>SKYFREE</b>
<b>43</b>	<b>SKYFIX</b>
<b>45</b>	<b>MOTOR</b>
<b>46</b>	<b>FABRIC</b>
<b>47</b>	<b>COLOR</b>
<b>49</b>	<b>INFO</b>

# CEDRUS

*Cedrus, while getting support from the aluminum poles located at the front section of the pergola, at the rear section, with the help of special output flange plates and steel support structure, it provides an opportunity to mount areas like "wall" or "ceiling". On the frontal pole, the aluminum valley profile, which is placed in a horizontal direction with respect to the product, collects the flowing water with use of the inclination and transfers it to outside via its special water drainage.*



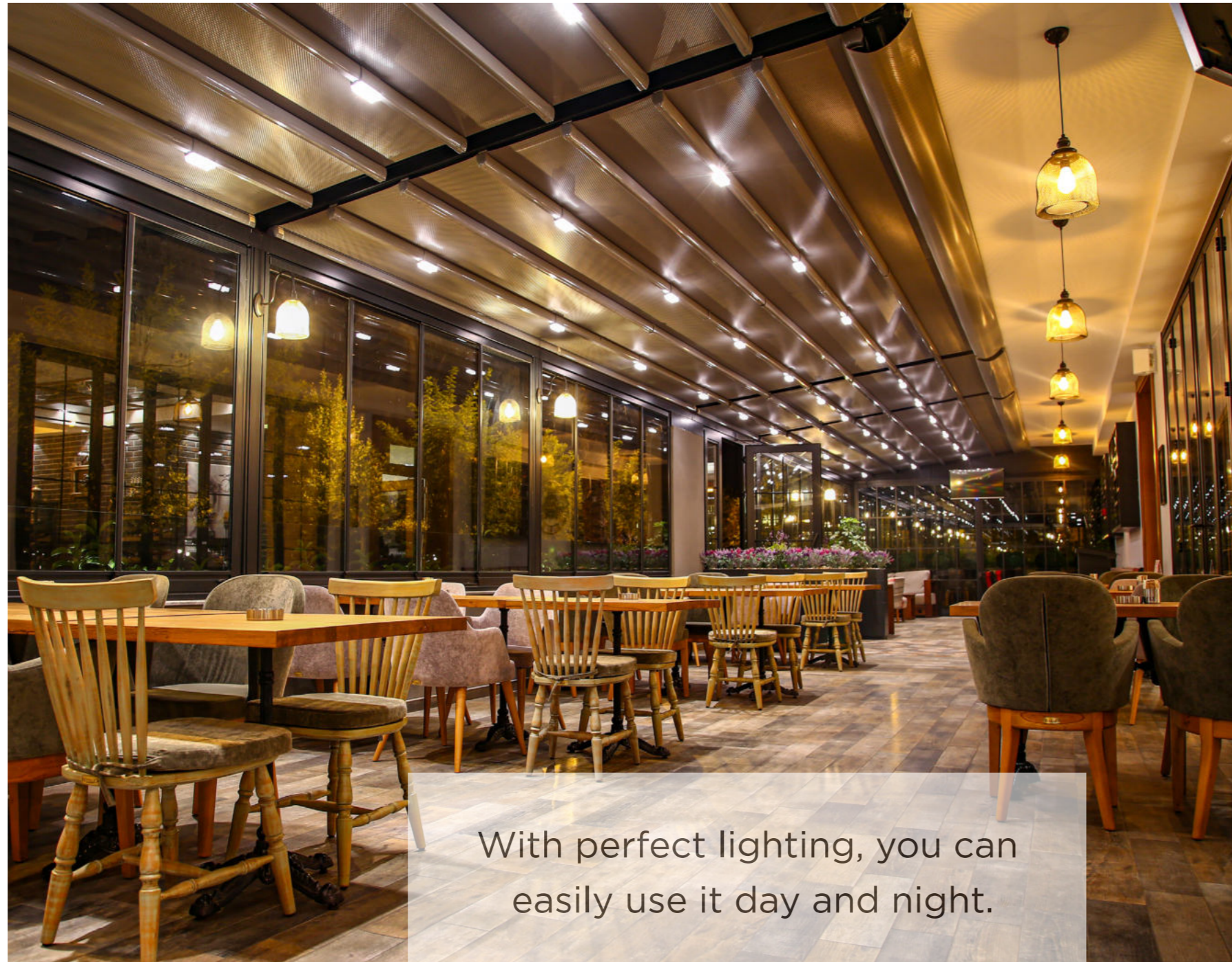


## Method of Use:

Cedrus, has an elegant and strong design that you can very comfortably use both in commercial and personal areas.

In assembly, with both the availability of mounting both on the "wall" and on the "ceiling" and low level of cost per meter-square, as an affordable and elegant product, it will serve you for many years.

Cedrus can be manufactured and used in the way of a single module or, by bringing together more than one pergola in the desired direction; it can be used as a multiplex as well.



With perfect lighting, you can easily use it day and night.

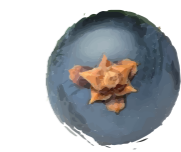
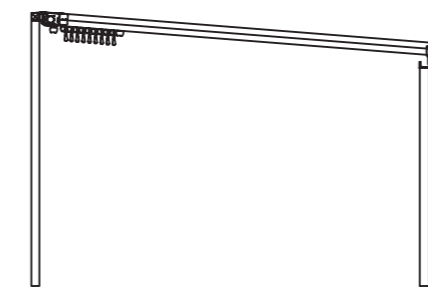




# JUNIPER



*Juniper, while getting support from the aluminum poles located at the front section of the pergola, at the rear section, with the help of steel poles of dimensions 100x100x3mm, 100x150x4mm or 200x200x5mm that are placed under the steel construction and that have the same dimension with the horizontal construction, it provides an opportunity to mount the product without getting any support from another structure.*



*On the frontal pole, the aluminum valley profile, which is place in a horizontal direction with respect to the product, collects the flowing water with use of the inclination and transfers it to outside via its special water drainage.*





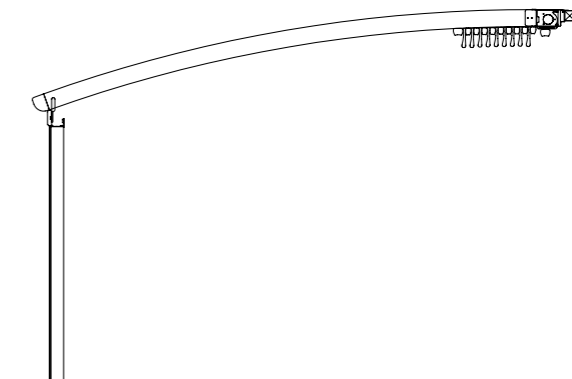
# WILLOW



*Willow, has an elegant and flamboyant design that you can very comfortably use both in commercial and personal areas. Ray profiles that are shaped with special radius add depth and distinguished look to your living area.*



*On the frontal pole, the aluminum valley profile, which is placed in a horizontal direction with respect to the product, collects the flowing water with use of the inclination and transfers it to outside via its special water drainage.*





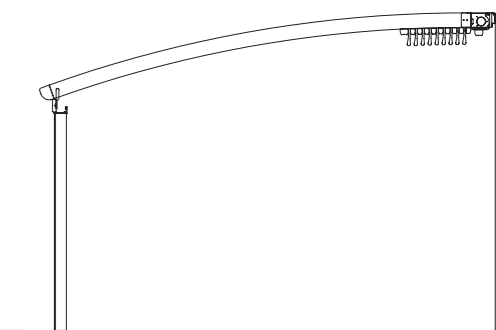


# OLIVA

*Oliva is an elegant and special design that adds value to your space and that is manufactured with rail profiles of radius shaped in different angles.*



*Oliva, while getting support from the aluminum poles located at the front section of the pergola, at the rear section, with the help of steel pole-sof dimensions 100x100x3mm, 100x150x4mm or 200x200x5mm that are placed under the steel construction and that have the same dimension with the horizontal construction, it provides an opportunity to mount the product without getting any support from another structure.*

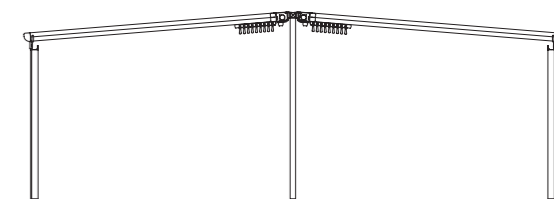




# CARPE



*Carpe is basically a “double-sided” product that is supported with a steel backbone and is used to cover large areas. Regarding the product dimensions of Middle Backbone, it is composed of vertical and horizontal bearings of dimensions 100x100x3mm, 100x150x4mm and 200x200x5mm.*



*This backbone is strongly fastened to the floor via strong plates and concrete anchorages.*



*The rails that are mounted to the Acre main steel construction are inclined forward with a certain angle and fastening to carrier poles made of aluminum completes the structure.*



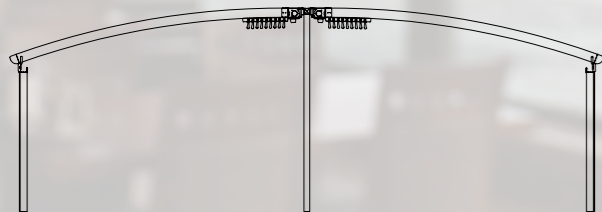


OXIA

# OXIA

*Oxia is basically a "double-sided" product that is supported with a steel backbone and is used to cover large areas.*

*Rails structured in radius form adds visual attraction and thanks to additional volume created, the perception of depth in your area would excel.*



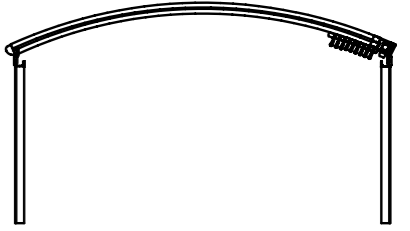
*Regarding the product dimensions of Middle Backbone, it is composed of vertical and horizontal bearings of dimensions 100x100x3mm, 100x150x4mm and 200x200x5mm.*



# SELVI

*With rails given the form of a full radius, both at the front and at the rear side attached to poles, Selvi is a special application that is given the form of an arch.*

*Selvi has two separate stream profiles, both at the front and at the rear, that function independently and water drainage requirement that appears as a result of the arch structure is provided equally from each side.*





---

all day



---

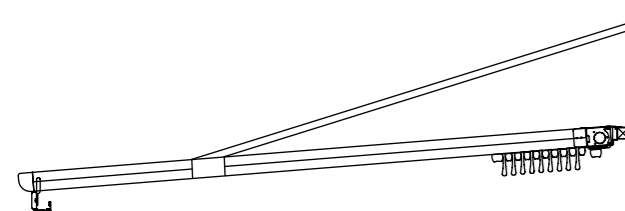
comfort

---

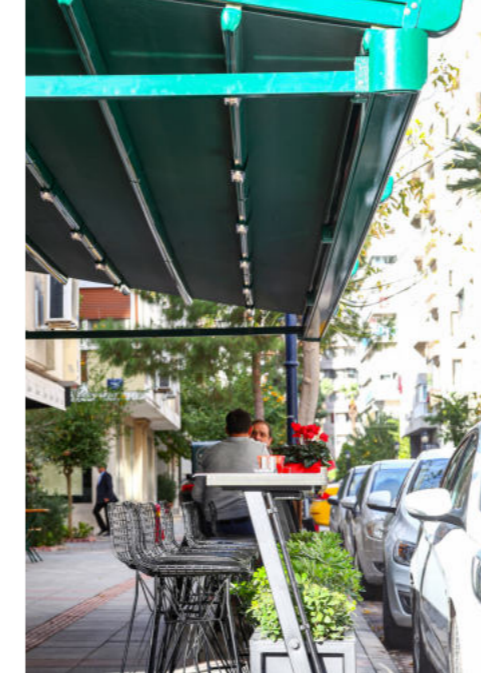


# PINO

Pino allows mounting on the wall or the ceiling of your current area with the use of special steel hanger parts that are connected over the bearer rail profiles of pergola, without the need of any pole support at the front side.

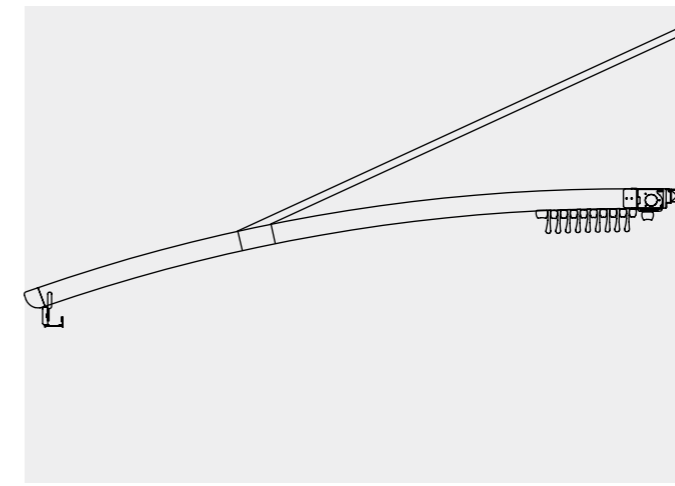


The aluminum stream profile that is placed in horizontal direction with respect to the product collects the flowing water via the inclination and then transfers it outside from special chain drainage.





# B S S



*Bosso is an elegant design that adds value to your area and it is manufactured with rail profiles that can be shaped in radius of different angles.*

*Bosso allows mounting on the wall or the ceiling of your current area with the use of special steel hanger parts that are connected over the bearer rail profiles of pergola, without the need of any pole support at the front side.*

*The aluminum stream profile that is placed in horizontal direction with respect to the product collects the flowing water via the inclination and then transfers it outside from special chain drainage.*

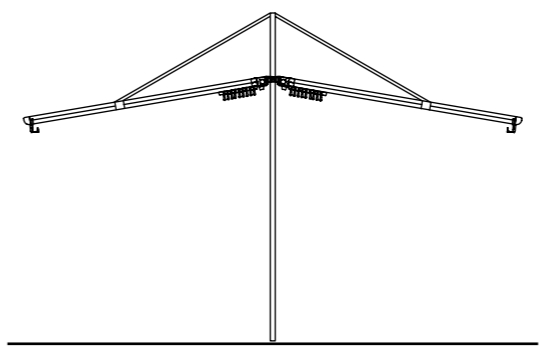




# DAPHNE

*Daphne is primarily composed of a special support construction structured on top of steel poles.*

*This is mounted to the central backbone with the help of special steel hanger parts that are connected over the bearing rail profiles of the pergola*



*Thanks to materials of size 100x100x3mm, 100x150x4mm or 200x200x5mm that are determined according to the dimensions of the steel structure, it will serve you for long years.*



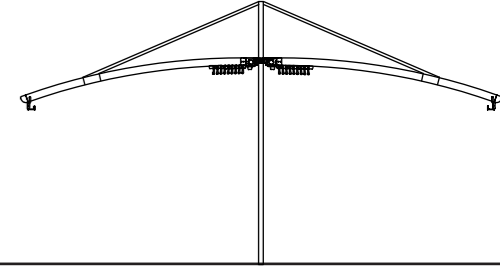


# SEKOYA



*Sekoya is primarily composed of a special support construction structured on top of steel poles.*

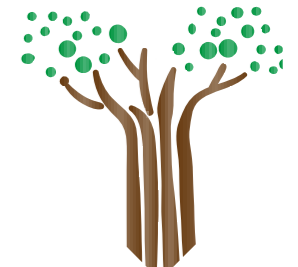
*This is mounted to the central backbone with the help of special steel hanger parts that are connected over the bearing rail profiles of the pergola.*



*Bearing rails are given a distinct aesthetics with special radius degrees that will be shaped according to your taste.*



*Thanks to materials of size 100x100x3mm, 100x150x4mm or 200x200x5mm that are determined according to the dimensions of the steel structure, it will serve you for long years in safety.*





---

*As distinct from the other models, Aline is manufactured without an inclination.*

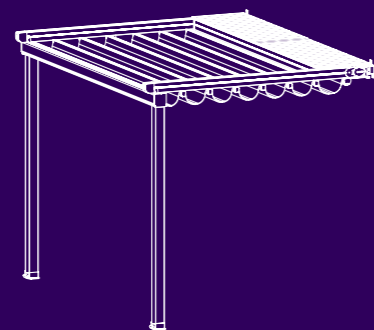
*Again apart from the other models, in this model, there is no need for a stream profile at the backside.*

---



**AINE**

*Aline is a special part of our pergola family that is specifically designed for use during summer times.*



# Verlass

*Verlass Glass Systems is a motorized and controlled glass system with vertical axis.*

*Our Verlass Guillotine systems are complementary in terms of both design and functionality, specially designed for use in our pergola products.*

*However, with a flexible and adaptable construction structure, you can safely apply any area you need.*

*The system is installed on the rail profiles located in the side sections of the glass produced as 2 or 3 wings.*

*The engine box at the top of the system opens and closes the system by means of steel chains and gears.*

*Verlass guillotine glass systems are well ahead of other systems with the unique balance option reaching up to "3,5 cm" on sloping floors.*

*Each chain in the two-chain system has a carrying capacity of 1800 kg*





# Skymatic Series

*Welcome to Sunset "SkyMatic" family...*

*Skymatic Series of which the unique layout and industrial design is developed by Sunset AS offers perfect solutions for your different living area requirements.. We are confident that with its wide range of products spanning from bioclimatic pergola alternatives to winter garden, SkyMatic Series will satisfy all your expectations that exceed the classical pergola products. We will be honored to introduce you the members of the family:*

**SkyCloud**

**SkyFree**

**SkyFix**

# SKY

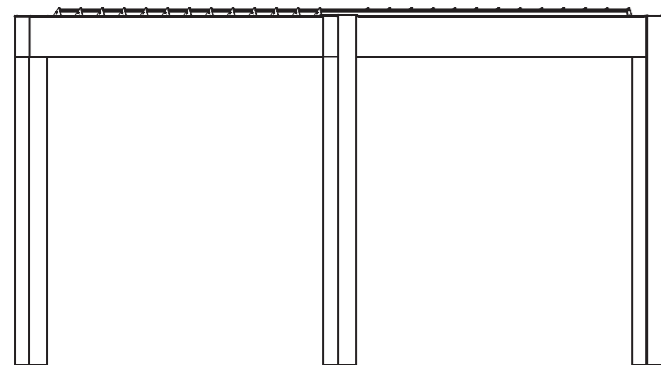


## cloud

*In our SkyCloud product, the aluminum panels that can rotate on their own axis between 0 and 135 degrees will provide you an unlimited freedom of use:*

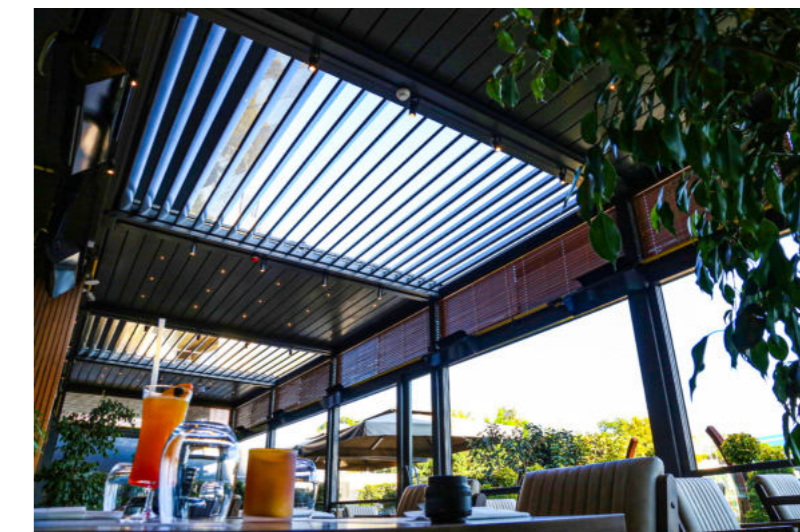
*While SkyCloud can be assembled as an independent product that stands on its own feet, via special support weighting arms, it can also be assembled at the areas under ceilings or walls.*

*Via assembly of desired number of products side by side in the desired direction, SkyCloud model will enable you to fully enclose the area that you need to enclose.*



*SkyCloud can be mounted to your living areas without the need for any elevation.*

*Thanks to special design of the ceiling panels, the water is first transferred to the stream profiles that are hidden inside the body and from there, via sewing, transferred to the ground.*



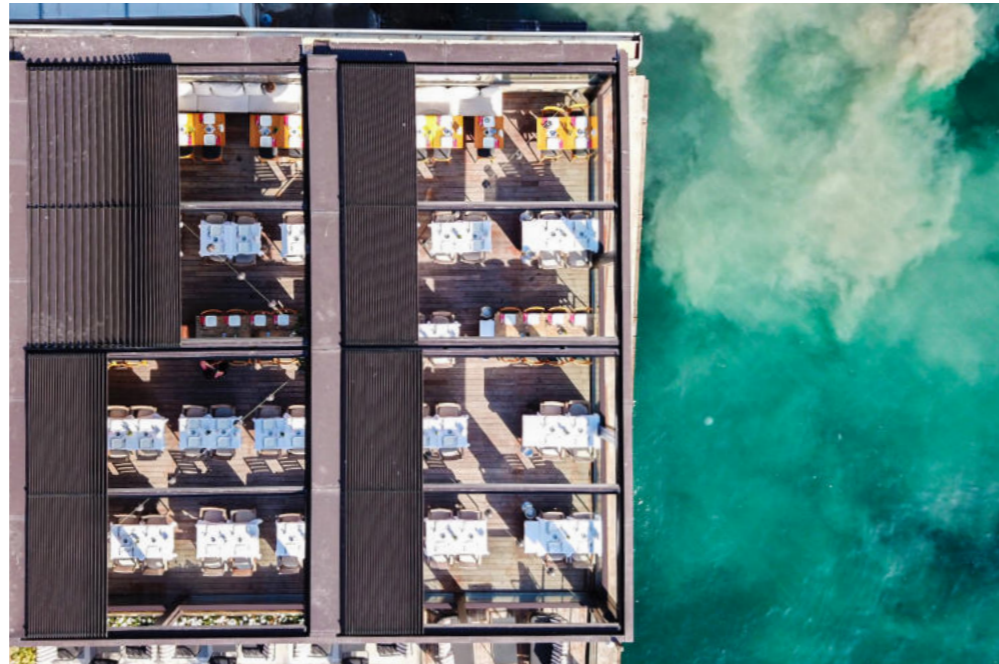
# SKY

free

*SkyFree is the folding and "Bioclimatic" type pergola of Sky family.*

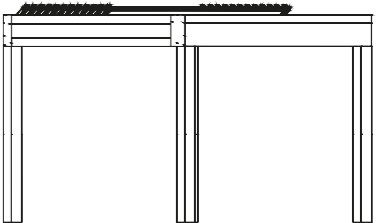
*Via an engine and spring mechanism that is integrated into the system, the aluminum panels that make up the ceiling move back and forward and enable you to obtain an open, closed or semi-open ceiling structure.*

*The angles that you will obtain at the ceiling panels gives you the options of protection, ventilation, heat and light control, all at the same time.*



*Closed, semi-closed or open ways of use will all make matchless contribution to your quality of life. In our SkyCloud product, the aluminum panels that form the ceiling and open with angles between 0 and 55 degrees will provide you an unlimited freedom of use.*

*While SkyFree can be assembled as an independent product that stands on its own feet, via special support weighting arms, it can also be assembled at the areas under ceilings or walls.*



# SKY

## fix

*SkyFix is a product of Sky family that is specifically designed for use, especially in the residential areas with the winter garden concept.*

*At SkyFix, the ceiling is manufactured with "Double-Glazing" or "Polycarbonate" panels. It can be established both as an extension of your house or in your garden, as an independent structure standing on its own feet.*

*With their opaque and semi-opaque surfaces, the double-glazing and polycarbonate panels that make up the ceiling concept integrate you with the environment and provides you a delighting living space.*

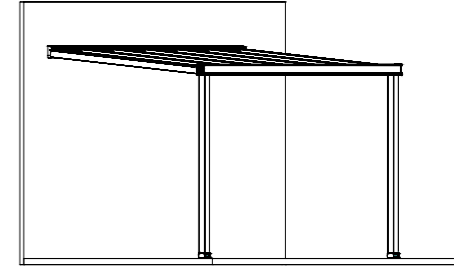
*With the side window and door systems that will be integrated into the product, SkyFix can be arranged as a complete winter garden as well.*

*In addition to that, with SkyFix, an unlimited number of your living area requirements like veranda, car park area and hobby house will be satisfied.*



*With its affordable price and assembly time that does not exceed a couple of hours, SkyFix, is a perfect solution for your needs that is both fast and economic.*

*Apart from its equivalents, SkyFix is the first and only system that provides double-glazing glass ceiling panels property.*







# somfy®

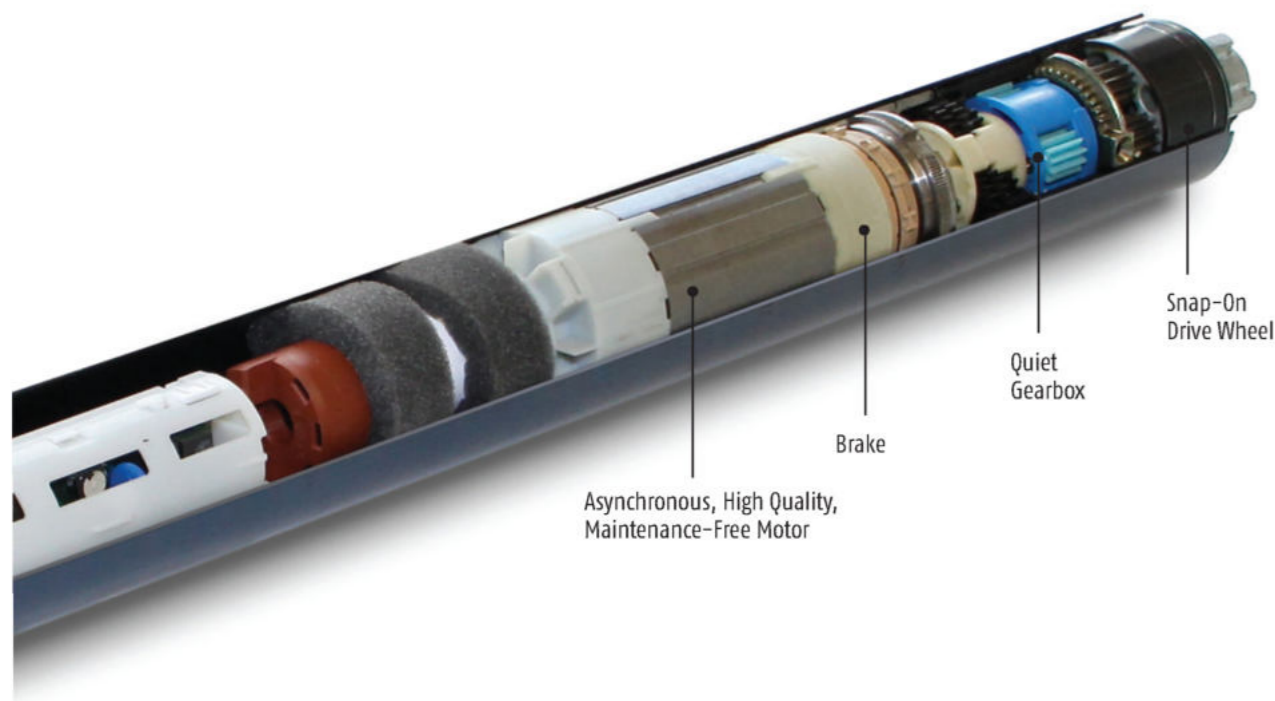


## Motor

Sunset A.S. is an Expert certified branch of Somfy brand, which is the finest quality engine producer of the world.

Somfy, which is the most important tube engine producer of the world, enables our product to serve you for many years without problems.

Somfy engines and Somfy Remote Controllers are guaranteed for a period of "5" years.



## Fabric

Sunset A.S. is a work partner of Sioen, which is largest and highest quality PVC fabric producer of the world.

Only Sunset presents the widest color and design color chart of Turkey to the taste of the customers.

We are confident that, among the fabric alternatives that are renewed every year, you will be finding the color and design that very well suits your living area.

## SIOEN

Technical Properties	
Fabric	100 % PES, 1100 dTex
Weight	850 gr/m2 DIN ISO 2286/2 1998
Boss	LIN
Characteristic	ABUV/SOP
Coating	1Jan
Fracture Resistance (WARP)	EN ISO 1421/ 1998
Fracture Resistance (WEFT)	EN ISO 1421/ 1998
Tearing Resistance (WARP)	DIN 53363 2003
Tearing Resistance (WEFT)	DIN 53363 2003
Adhesive Resistance	EN ISO 2411 2000
Heat Resistance	-30 / + 70 C DIN EN 1876/2 1998
Flame Retardant	NF P 92 507 2004

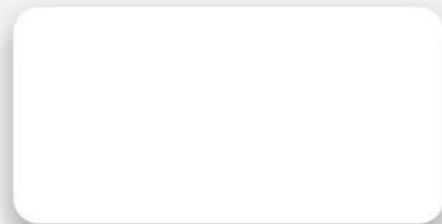




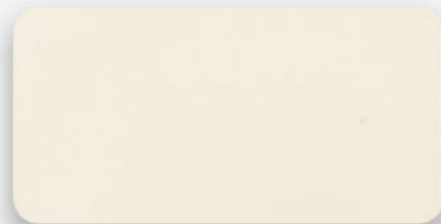
# Aluminium

Color options for aluminum

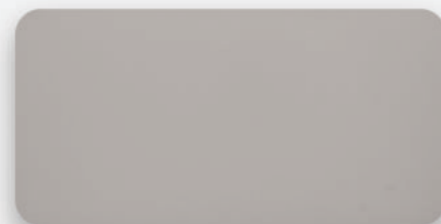
CLASSIC



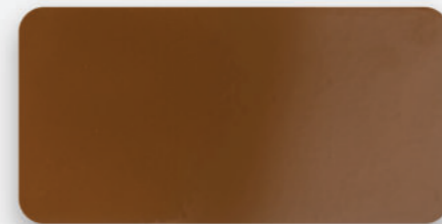
WHITE 9016 - Classic



CREAM 9001 - Classic

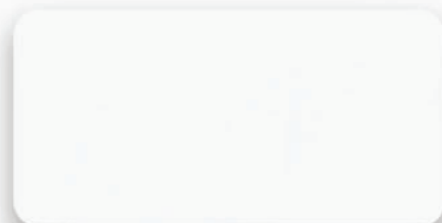


GREY 7046 - Classic



BROWN 8007 - Classic

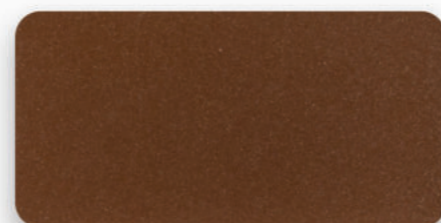
TEXTURE



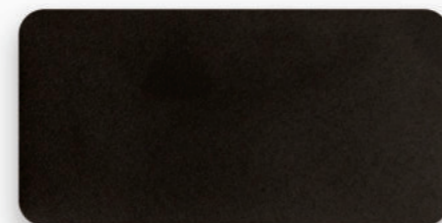
WHITE 9028 - Texture



COOL GREY 7100 - Texture

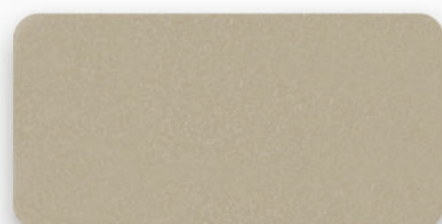


BROWN 8100 - Texture

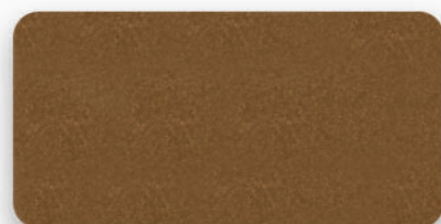


BLACK 9005 - Texture

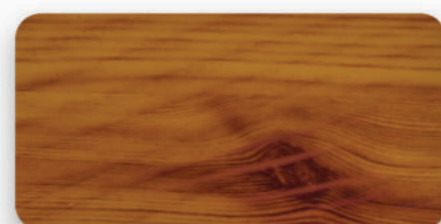
SPECIAL



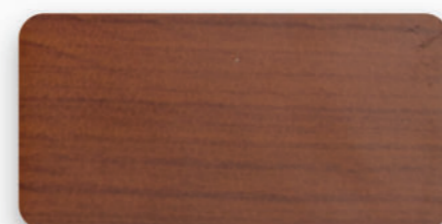
SAND CREAM 1032 - SPECIAL



COPPER 8800 - SPECIAL



LIGHT WOOD 9533 - SPECIAL



DARK WOOD 9812 - SPECIAL



### Quality Policy

The same today as it will be tomorrow, we are aiming to continuously improve on the expectations of our national and international customers together with their trust and support on us. We are aware of the fact that all sorts of inferiority cost are waste. Honesty, assiduousness and respect for the time are our irrevocable principles.

We believe that we will be able to ensure our progress in the direction of realizing our goals and principles with the active contribution of the employees in a continuous development environment.

### Mission and Vision

*Vision:* The same today as it will be tomorrow, we are aiming to exceed and continuously improve the expectations of our national and international customers. Honesty, assiduousness and respect for the time are our irrevocable principles.

*Mission:* The mission of our company is to become a global firm leader in its sector, that offers its customers fast, affordable and high quality solutions with the strong technical capacity that it possesses and making investment to information and while at the same time, not sacrificing on the health, security and environmental factors.

### Occupational Health and Safety Policy

By acting with the principle of "the best way to do a job is the safest way", our main targets for preventing employment-industrial accidents and protecting the health of our employees are as follows;

- Related with the issues of occupational health and safety, complying with all local and national laws, regulations and standards, and acting in that way,
  - Evaluating all of the risks associated with the occupational illnesses and issues of occupational health and safety and taking protective measures,
  - With the participation of all of our employees, eliminating the threats at their sources and adopting the principle of zero employment-industrial accident, and
  - In order to achieve success and for continuous development, ensuring that our employees receive all sorts of trainings on the subject of occupational health and safety and developing them continuously.
- A successful implementation of occupational health and safety is possible only with the collaborative work and support of the employees of the corporation. For this reason, occupational health and safety practices are the responsibility of all employees and are among the irreplaceable constituents of the corporate culture.

### International Organization for Standardization 9001:2008

Sunset A.S. guarantees that it will provide its customers world-standard products that meet the requirements of International Organization for Standardization 9001:2008

Sunset A.S. has adopted its' faith to the principle that customer satisfaction could only be achieved and maintained by a quality product, as its basic principle.

### CE Declaration of Conformity

With "CE DECLARATION OF CONFORMITY" Sunset A.S. guarantees that it meets the highest quality and security requirements of both domestic and international customers.

In that respect, in national and international markets, Sunset uses "1st class" materials as it has declared to its customers

and delivers these materials to its customers with the use of appropriate manufacturing methods.

### "5" Years of Guarantee

For all of the products manufactured by itself, Sunset A.S. provides "5" years of guarantee. Within this period of time, delicately resolving your problems related with manufacturing and raw materials and taking the necessary precautions to prevent these problems repeat in the future,

is an irrevocable element of Sunset A.S. quality policy.

### Environmental Policy

Respect for the environment is one's self-esteem. With this conscience, for a green world, clean and healthy environment, which is our common future, our basic goals are as follows;

- Use of raw materials and energy resources economically,
- Lowering and eliminating the pollution at its source by reducing our wastes to a minimum level,
- In order to prevent our products becoming unusable waste, designing and manufacturing them in a manner that is easy to assemble and separate, and
- By using recyclable materials, obtaining useful waste and recover it.

In order to realize these, we are aiming to ensure that, in a continuous development environment, all of our employees establish an environmental consciousness and conduct effective implementations.





Küçükbakkalköy Mah. Dudullu Cad.  
Brandium R2 Rezidans Blok  
No:23-25B/265  
Ataşehir / İstanbul - Turkey

[www.sunsetpergola.com.tr](http://www.sunsetpergola.com.tr)